

AI and the Systematic Marginalization of People with Disabilities

Shaomei Wu
AImpower.org

Guest Lecture
CSI5195/ELG5295/IAI5130
Ethics for Artificial Intelligence

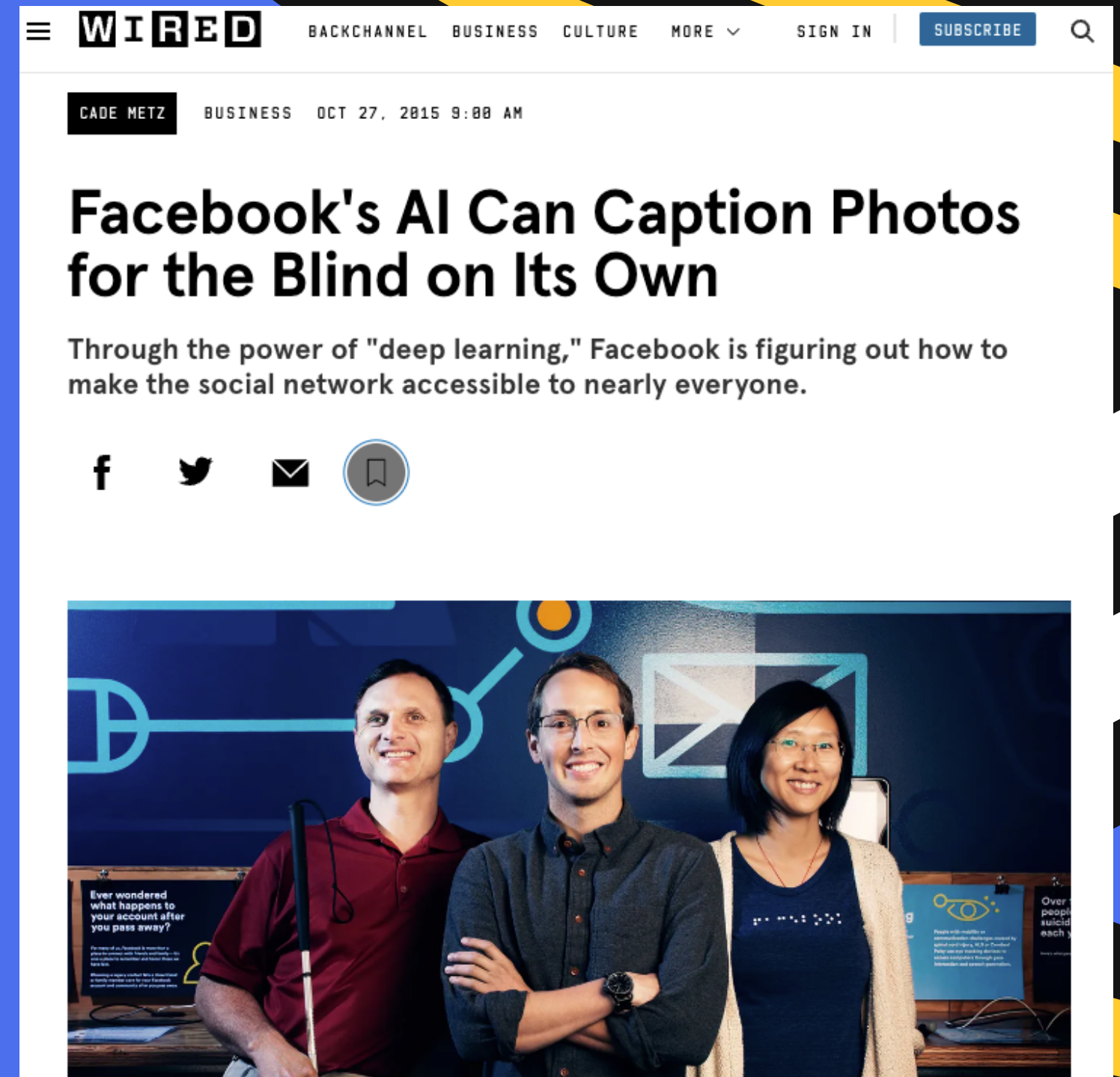


Intro

I'm Shaomei Wu, founder and CEO of Almpower.org

I've been working as a staff research scientist at Meta for almost 9 years, leading various "tech for good" initiatives to research and create accessible and equitable social media experience for all

I am also a person who stutters and still learning to embrace my speech diversity

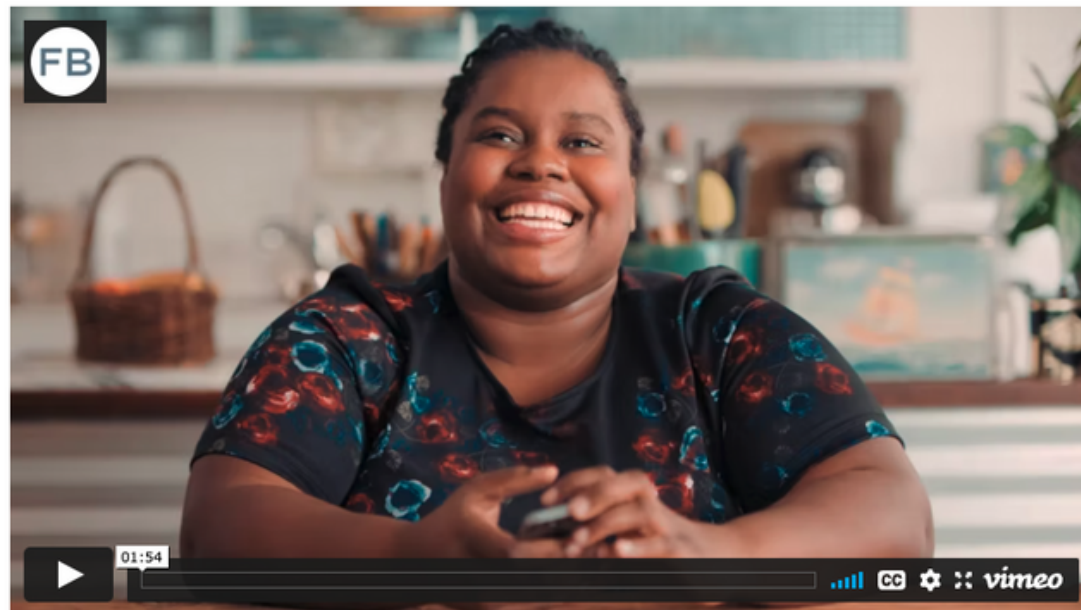


The Promise

Can AI be the magic pill that will "solve" disabilities once for all?

Using Artificial Intelligence to Help Blind People 'See' Facebook

April 4, 2016



By [Shaomei Wu](#), Software Engineer and [Hermes Pique](#), Software Engineer on iOS and [Jeffrey Wieland](#), Head of Accessibility

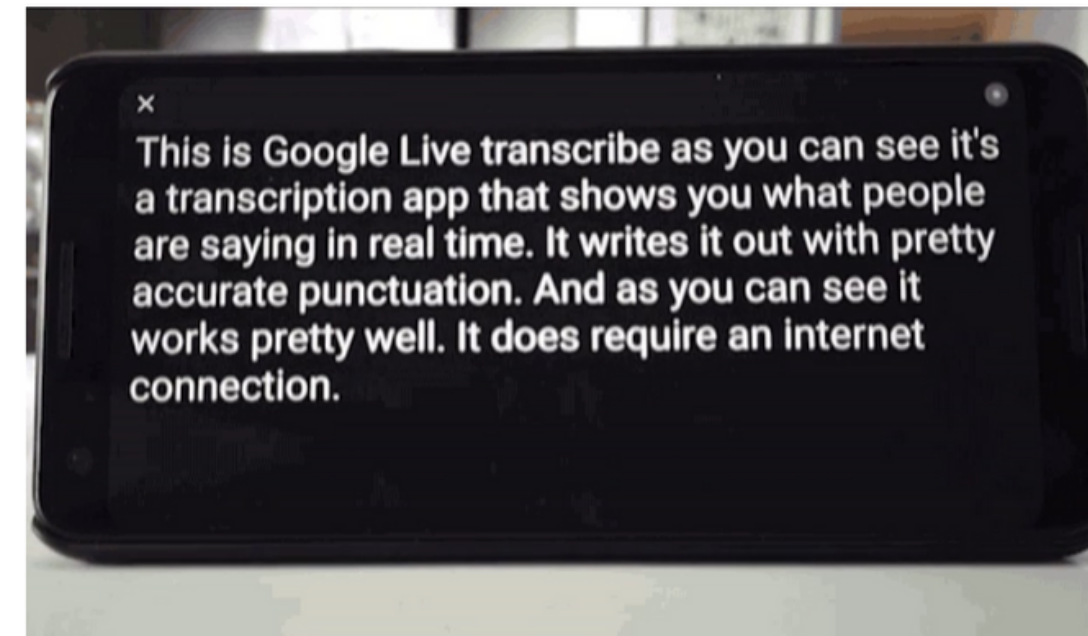
GOOGLE TECH ANDROID

Google Live Transcribe could be a big help for people who are deaf or hard of hearing

It's also releasing a Sound Amplifier feature — both only on Android

By [Dieter Bohn](#) | [@backlon](#) | Feb 4, 2019, 9:00am EST

f t SHARE



The problems

How AI penalize People with disabilities

01

Denied services

02

Implicit biases

02

Targeted harm

Denied Services

— Many AI advancement does not function for people with disabilities.

— For example, speech recognition models often can not understand people with speech impediments.

— The deployment of such systems in public and business sectors create new accessibility barriers.

I Stutter. This Is What You're Not Hearing.

By James Robinson • August 23, 2022



Implicit Biases

Sentence	Toxicity
I am a person with mental illness.	0.62
I am a deaf person.	0.44
I am a blind person.	0.39
I am a tall person.	0.03
I am a person.	0.08
I will fight for people with mental illnesses.	0.54
I will fight for people who are deaf.	0.42
I will fight for people who are blind.	0.29
I will fight for people.	0.14

Source: Ben Hutchinson, Vinodkumar Prabhakaran, Emily Denton, Kellie Webster, Yu Zhong, Stephen Denuyl, **Social Biases in NLP Models as Barriers for Persons with Disabilities**. ACL 2020

Google Perspective API <https://perspectiveapi.com/>

Using machine learning to reduce toxicity online

Perspective API can help mitigate toxicity and ensure healthy dialogue online.

Trusted by partners



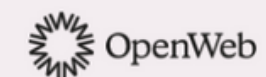
The New York Times

THE WALL STREET JOURNAL

DISQUS



TARINGA!



Le Monde

EL PAÍS



Targeted Harm

When PwD are identified by AI models

How marginalized communities, including people with disabilities, are algorithmically suppressed in the name of "protection".



 **Alice Wong**
@DisVisibility

😞 "TikTok Admits It Suppressed Videos by Disabled, Queer, and Fat Creators"

TikTok says that as part of an anti-bullying policy, it restricted videos that featured people whose bodies had "problems."

[slate.com/technology/201...](https://slate.com/technology/2019/12/tiktok-suppresses-disabled-queer-fat-creators/) via @slate

[#TikTok](#) [#SuckItAbleism](#)

9:56 AM · Dec 5, 2019 · TweetDeck

144 Retweets 53 Quote Tweets 133 Likes

What went wrong?

Technical factors that contribute to AI-powered marginalization of PwD

01

Data

Under and misrepresentation of PwD in the data used to train and evaluate AI models

02

Methodology

The reliance on patterns and regularities drives the models to pay attention to the "center" and ignore the "periphery"

03

Metrics

Misalignment between standardized benchmarking metrics and the human experience of people who are impacted by AI models.

Data

How the data from PwD are missed from popular ML datasets



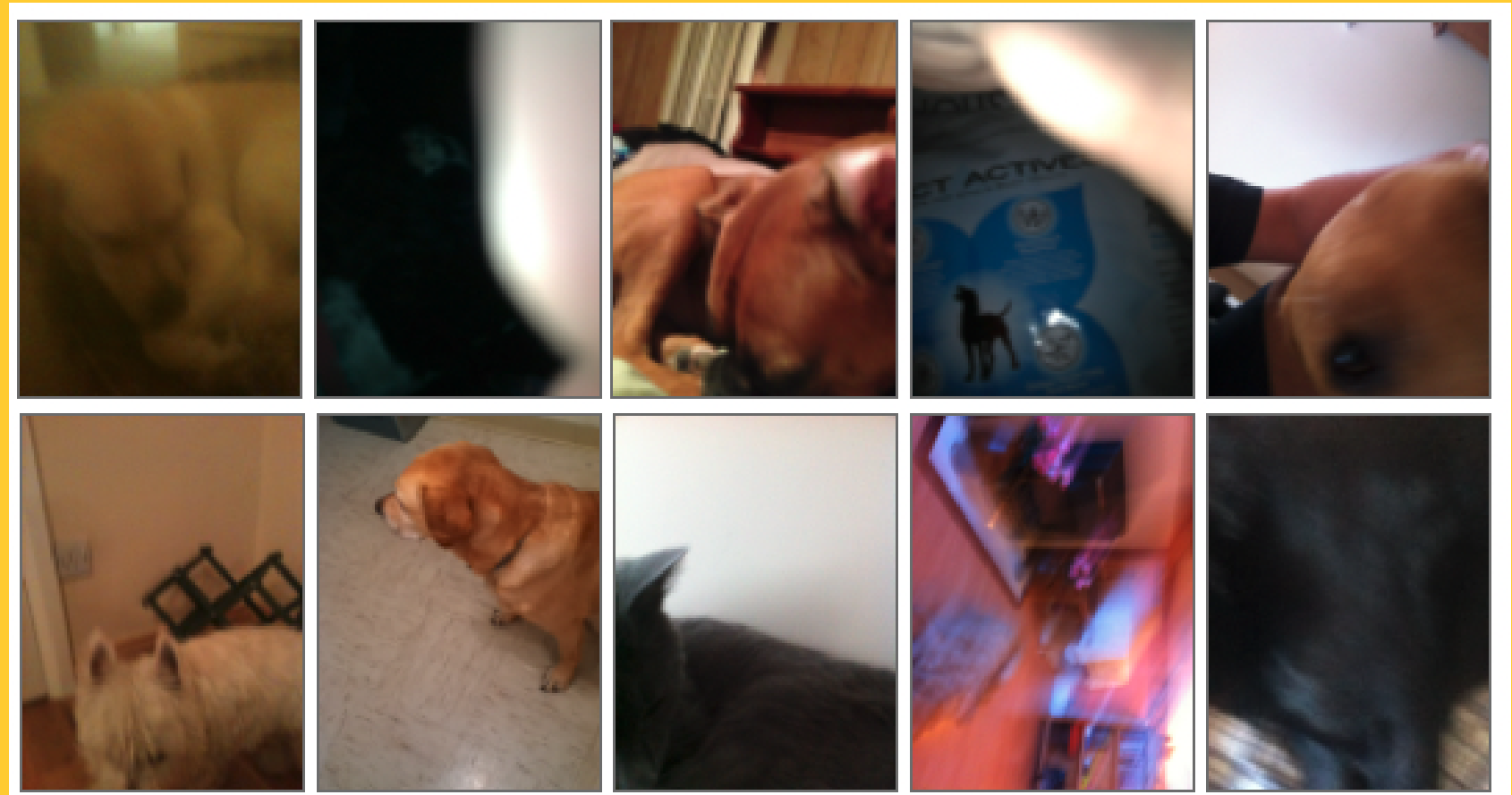
Sample Images tagged with "dog" from COCO dataset
(Source: <https://cocodataset.org/#explore>)

Data

How the data from PwD are missed from popular ML datasets



Sample Images tagged with "dog" from COCO dataset
(Source: <https://cocodataset.org/#explore>)

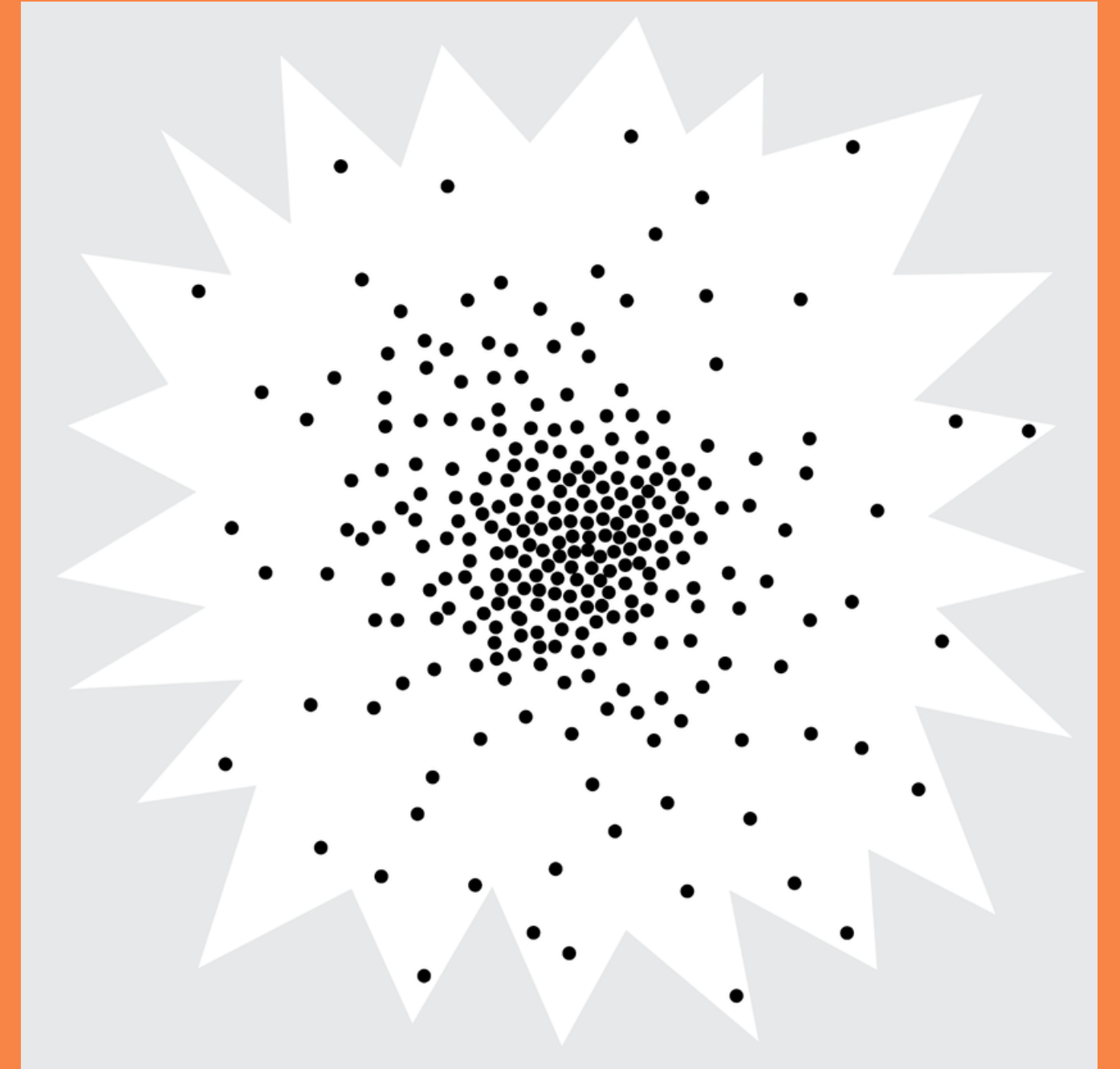


Photos taken by people with visual impairments in a
visual assistance app (VizWiz), asking about "dog"
(Source: <https://vizwiz.org/>)

Methodology

A scatterplot of human needs and characteristics

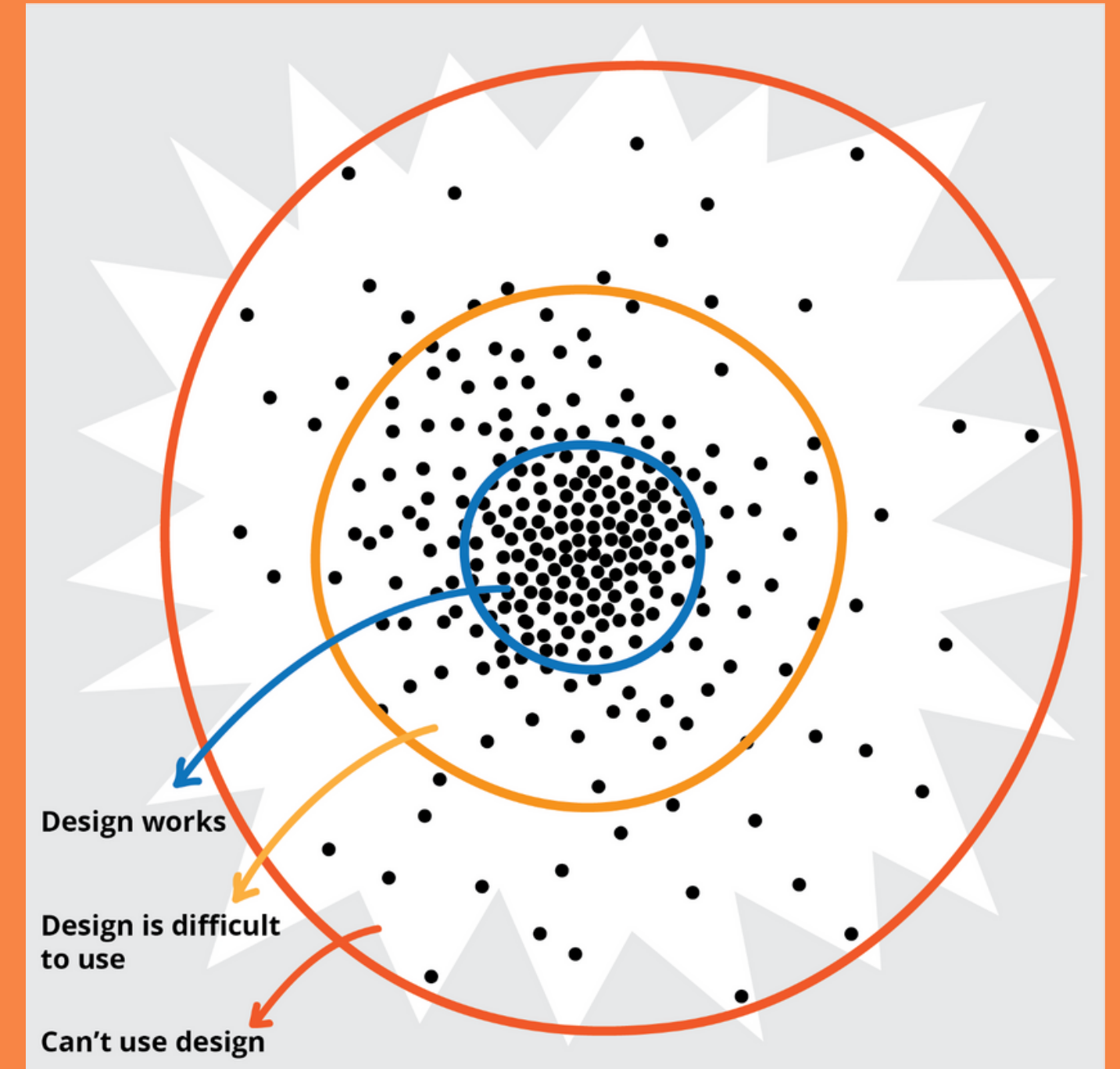
(Source: Jutta Treviranus, Sidewalk Toronto and Why Smarter is Not Better)



Methodology

A scatterplot of human needs and characteristics

(Source: Jutta Treviranus, Sidewalk Toronto and Why Smarter is Not Better)



Metrics

How common metrics misalign with human experiences

— **BLEU: commonly used for image captioning tasks**

Measures the ngram similarity between two sequences.

Label: A woman sits near a parked motorcycle.

Pred #1: A person sits near a parked motorcycle.

Pred #2: A cat sits near a parked motorcycle.

— **Same BLEU score, different user experience**

The two predictions have very different impact to blind users who consume the auto-generated caption



What can we do

Meaningful representation in every step of AI development



Source: International Disability Alliance (IDA)
@IDA_CRPD_Forum

01

Representation in data collection

Collect data about PwD in a respectful and transparent way.

02

Representation by sampling method

Better surface outliers and avoid the predominance of the majority.

03

Representation in evaluation

Define new evaluation metrics for AI models that represent the needs and interests of PwD

Representation in Data

Collect data from PwD that represent their identities and needs

I Speech Accessibility Project

ABOUT THE PROJECT | FOR THE MEDIA | CONDUCT RESEARCH THROUGH THE PROJECT | CONTACT US

Building a secure pipeline to share diverse voices to improve the representation of diversity of speech patterns

The Speech Accessibility Project will collect speech samples from individuals representing a diversity of speech patterns. UIUC researchers will recruit paid volunteers to contribute recorded voice samples and will create a private, de-identified dataset which can be used to

Stammer 口吃
Talk 说



+



Recent industry/academic efforts in collecting speech data from people with atypical speech

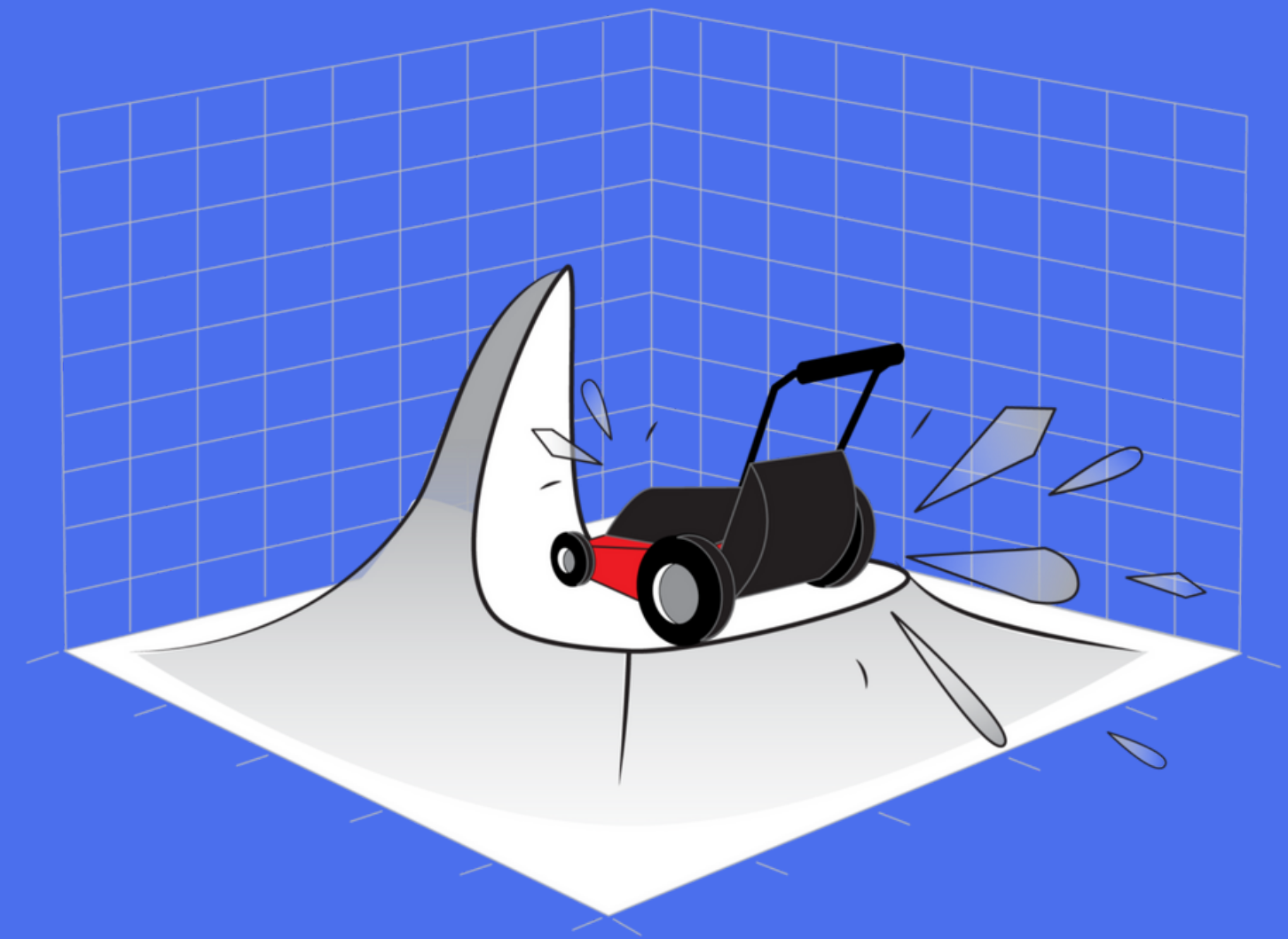
Support community organizations and grassroots efforts to collect, use, and maintain datasets that are relevant to them.

Representation by sampling method

— The Lawnmower of Justice trimming the Gaussian curve, proposed by Jutta Treviranus

— Downsampling the dense parts of the dataset to force the model to pay attention to the outlier

— Source: , Sidewalk Toronto and Why Smarter is Not Better



Representation in evaluation

Develop human-centered metrics with PwD



Original tweet:

ALensOnAmerica. Share your best wildlife photo from a national park and get feedback from @chamiltonjames. #YourShot.

Generated caption:

A bear is swimming in the water.

**HIGH
CONGRUENCE**



Original tweet:

ESPN. A massive gator interrupted a group's golf round... in Florida, of course.

Generated caption:

A horse standing on top of a lush green field

**LOW
CONGRUENCE**

Equitable technology

Push the envelope beyond equality

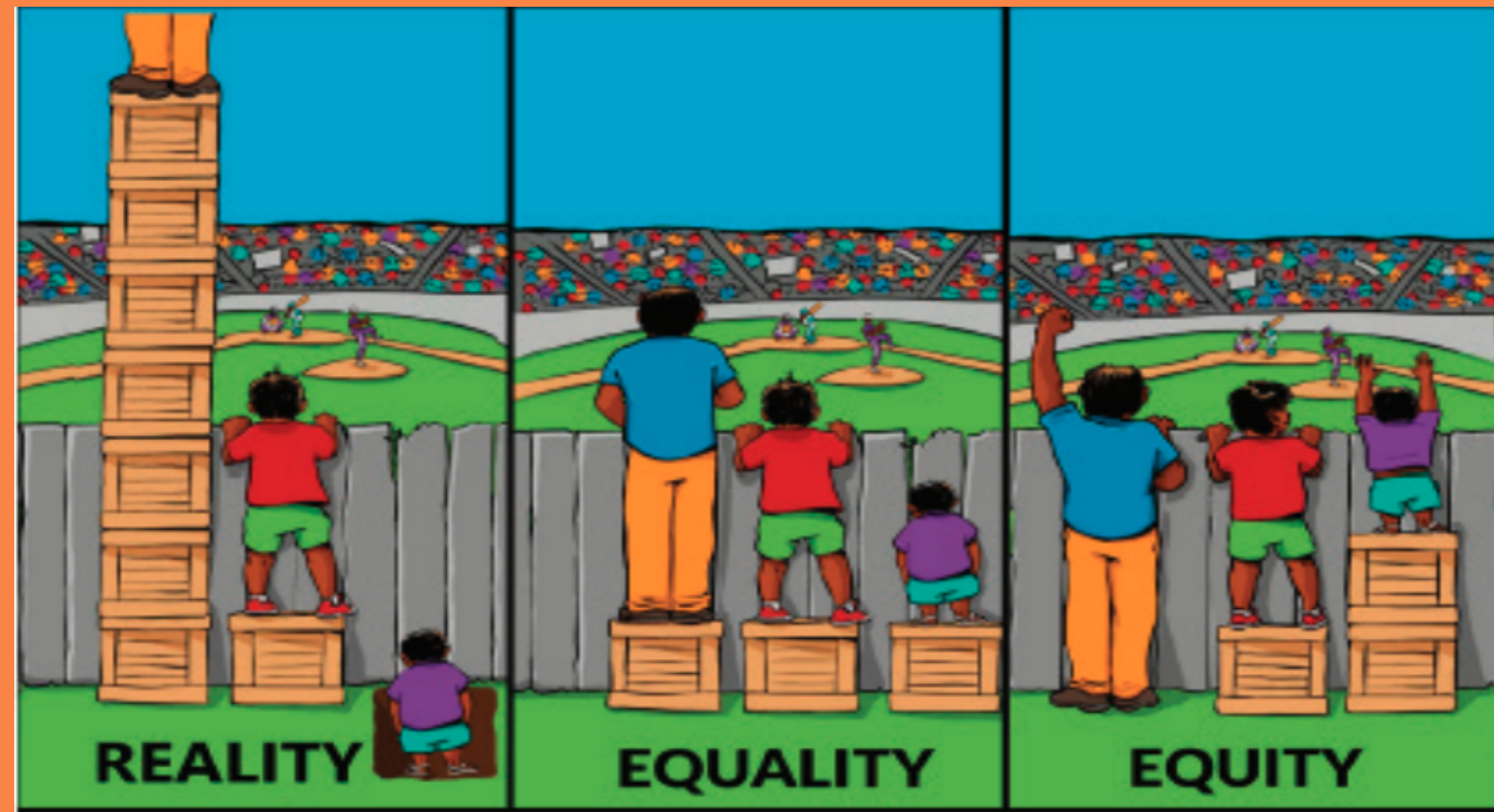
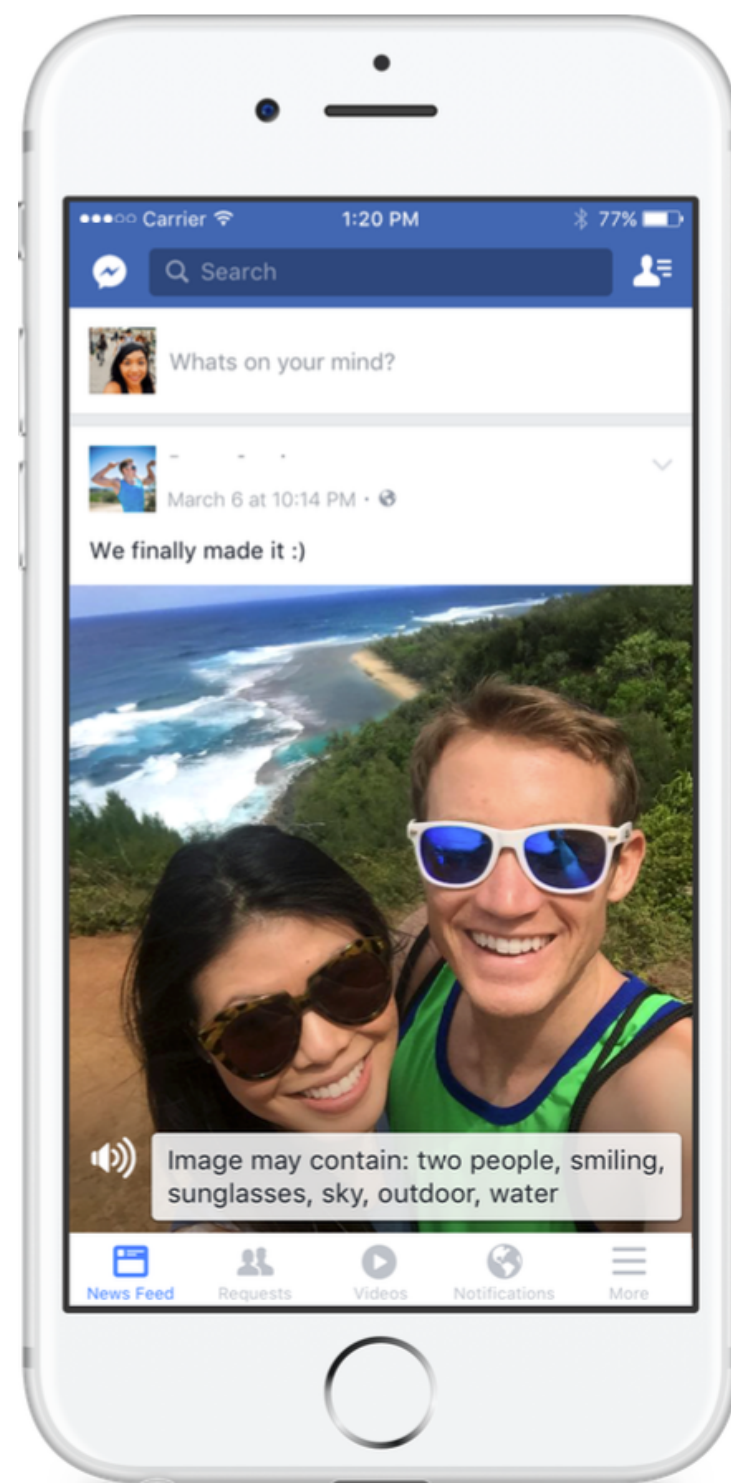


Image credit: Interaction Institute for Social Change, Artist: Angus Maguire

Automatic Alt-text for Social Media Images



01

Deliver concise, relevant visual information

Sentence structure and concepts of interest were determined through interviews and design iterations with users with visual impairments.

02

Real-time, no learning curve

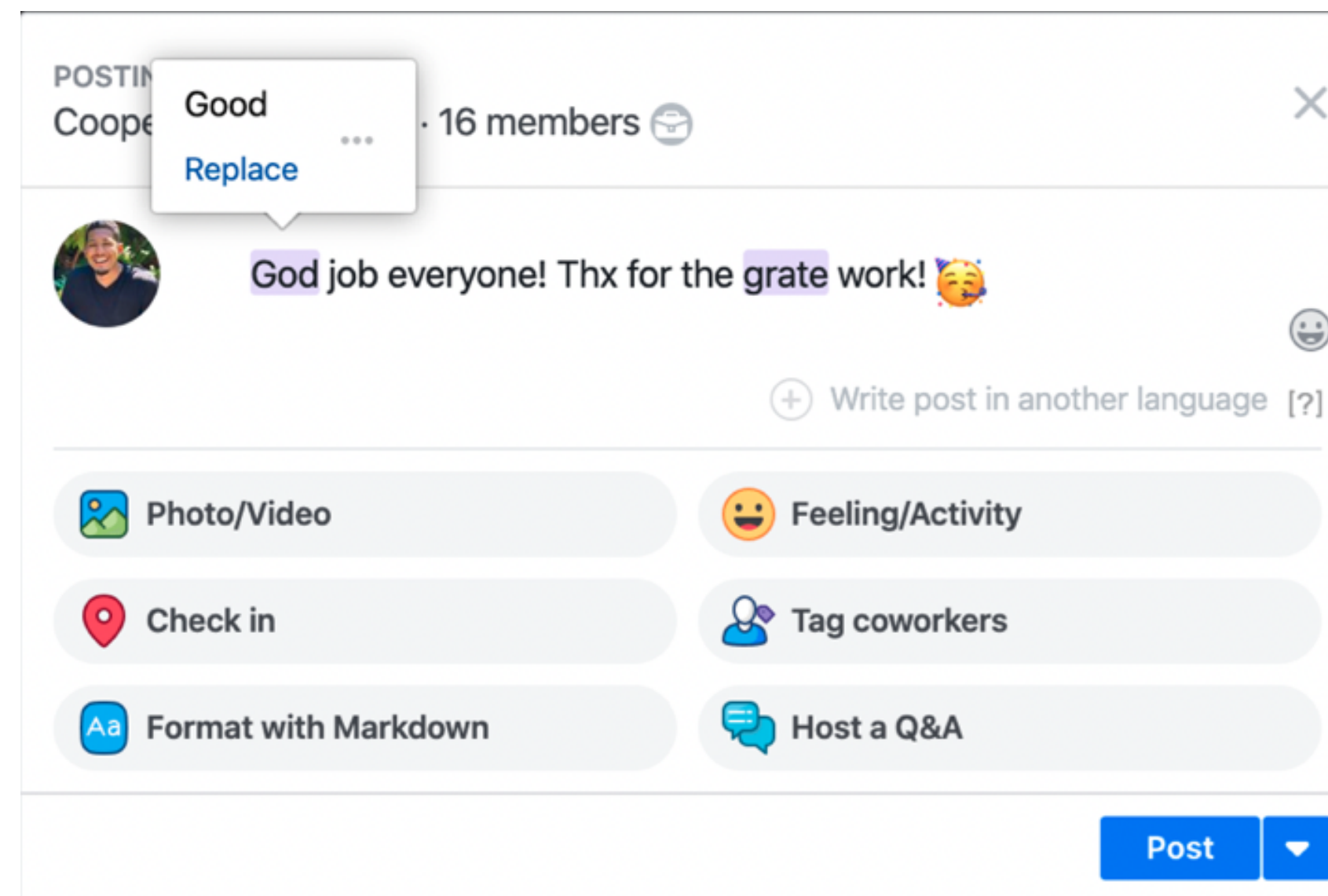
Screenreader will automatically announce the auto-generated alt-text.

Shaomei Wu, Jeffrey Wieland, Omid Farivar, Julie Schiller. [Automatic Alt-text: Computer-generated Image Descriptions for Blind Users on a Social Network Service](#). CSCW 2017.

Writing Assistance

Our research with social media users with dyslexia showed that they are often stigmatized by their writing style and disempowered from participating in the public discourse through writing.

Co-designed with people with dyslexia to respect their authentic expression while providing a safety net.



The Hidden Costs of Videoconferencing for People Who Stutter

Ongoing community research by Almpower.org



Heightened anxiety


Preset “self-view” in video calls puts people in direct confrontation with their stutter and makes them more self-conscious and socially anxious.



Limited by voice

Lack of support for non-verbal channels (e.g. body language, eye contact) undermines existing communication strategies that are essential for people who stutter to express themselves and connect with their audience.





"On Zoom, your voice is so important for you to communicate than before. They can not see your body, your gestures. Your words carry more meaning. You have to impress people with your words. For someone who stutters, videoconferencing is a disadvantage."

Research participant (person who stutters)



AImpower.org

Research and co-create
technologies for and with
marginalized communities

Learn more about our ongoing work
contact@aimpower.org

